

Thermostatic steam traps

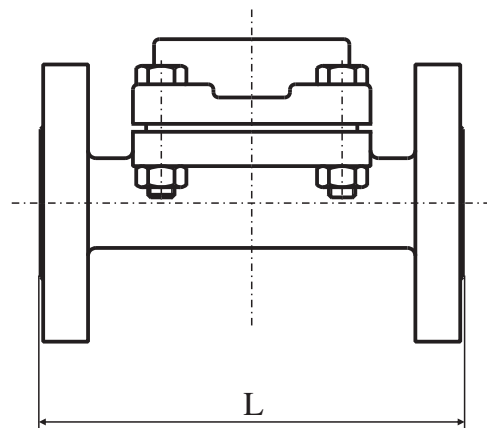
Type TKL DN 15 - DN 20

Steam traps type TKL come with the threaded connection of R1 / 2", R3 / 4" R1" and the flange connection from DN15 up to DN50.

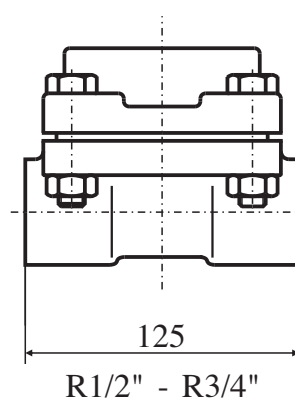
Steam traps type TKL DN15 and DN20 and type TKL R 1/2" and 3/4" have one thermal capsule type TK (picture below).

Steam trap housing is made of cast iron or cast steel. It can be disassembled, in order to enable quick and easy replacement of thermal capsule. Replace capsule is possible without removing the steam trap from the pipeline, and the time required for capsule replacement does not exceed 15 minutes. Replacement of the capsules are practically completed overhaul of separators.

These steam traps can be mounted in any position, depending on the capsule filling may discharge condensate undercooled up to 40°C. Standard filling of the capsule enables condensate discharge up to 10 C subcooling.

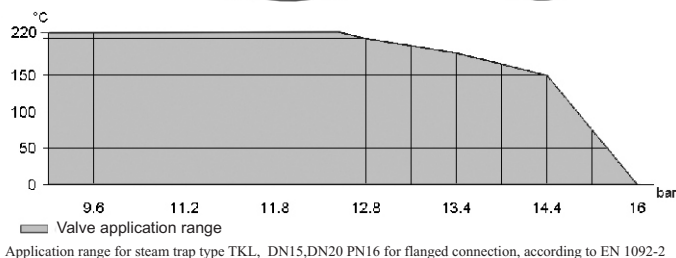


Installation measures	TKL DN15	TKL DN20
L	150	160



Mass:

- DN 15 - 3,5 kg
- DN 20 - 4,0 kg
- R1/2" - 2,4 kg
- R3/4" - 2,3 kg



Product: Thermostatic steam trap, type TKL

Part	Material
Housing	EN-GJL-250 (DIN GG-25)
Cover	EN-GJL-250 (DIN GG-25)
Thermo capsule	1.4301

